

# Restructuring of Student Services

## Presidential Charge:

- Move student development functions from a campus-reporting line into a new collegewide student services division
- Task Group formed representing faculty, staff, students and administrators
- Research, best practice interviews, campus listening tours

# Restructuring of Student Services

- Tenets derived from Task Group
  - Ensure that we don't have bureaucratic layers
  - Establish centers at campuses for several student populations to improve student success
  - Improve student access from the moment that students enter our campus by creating a welcome center concept on all campuses

# Restructuring of Student Services

- Tenets derived from Task Group Cont'd
  - Provide symmetry for departmental reporting structures
  - Ensure that Student Services administrative leadership is aligned appropriately with other division's structures
  - Provide Student Services with resources needed to impact student completion

# Time Line

- October 3 Task Group Commenced
- November 1 Task Group Forwarded Recommendation to Sr. VP
- December 12 Sr. VP Forwarded Recommendation to President
- January 12 President Approved Model
- February 8 -10 Informational Campus Forums
- July 1, 2012 Implementation

# Personnel Shifts

- Director of ADA Compliance
- Special Assistant to the SVPs for Academic Affairs and Student Services
- Office of Academic Initiatives Staff
- Articulation, Transfer and Academic Services Staff
- Collegewide Childcare Staff

# Positions Changed in Scope

- Director of Student Employment Services to Director of Career Services (Combining Employment Services and Career Centers)

# Positions Changed in Scope

- Deans of Student Development at (Campus) to:
  - Collegewide Dean of Student Access and (Campus) Student Services
  - Collegewide Dean of Student Success and (Campus) Student Services
  - Collegewide Dean of Student Engagement and (Campus) Student Services

# Newly Defined Role for Deans

- Collegewide responsibility for student access, student success and student engagement
- Day to Day responsibility for student services on their campuses which includes:

B.I.T./Student Discipline

Assessment Centers

Welcome Centers



# Newly Defined Role for Deans

Recruitment

Counseling and Advising Services (Including  
Career, Disabilities, International/Multi-  
Cultural, Mental Health, Transfer, Veterans

First Year Experience

Grants

International/Multi-Cultural Centers

# Newly Defined Role for Deans

Montgomery Advisory Program

Career Services

Athletics

Veterans Centers

Student Life

Parent/Family Services

Adult Services

New Student Orientation

# Role of Collegewide Dean for Student Access

- Leads Student Access Collegewide to include:
  - Assessment Centers
  - Grants Improving Access (Upward Bound)
  - Welcome Centers
  - Response Center
  - Recruitment

# Role of Collegewide Dean for Student Success

- Leads Student Success Collegewide to include:
  - Advising Services
  - Counseling Services (Including Career, Disabilities, International/Multi-Cultural, Mental Health, Transfer, Veterans)
  - First Year Experience
  - Grants Improving Student Success
  - Montgomery Advisory Program

# Role of Collegewide Dean for Student Engagement

- Leads Student Engagement Collegewide to include:
  - Adult Student Services
  - Athletics
  - Career Services
  - Grants Improving Student Engagement
  - New Student Orientation
  - Parent /Family Services
  - Student Life
  - Veteran's Services

# New Student Support Areas

- MC Upward Bound Math and Science Office
- Welcome Centers On All Campuses
- Mental Health Counseling On All Campuses
- Student Support Services TRiO Offices for Germantown and Takoma Park/Silver Spring
- International/Multi-Cultural Center at Rockville
- Veteran's Centers On All Campuses

# New Student Support Areas

- Adult Student Services On All Campuses
- Parent/Family Services On All Campuses

**Office of the Senior Vice President for Student Services**  
**Senior Vice President**  
Dr. Beverly Walker-Griffea

Assistant to the SVPs  
for Academic Affairs and Student Services  
Ms. Rita Dodson

Executive Receptionist  
Ms. Cheryl Sullivan

Child Care Services Director  
Ms. Teresa A. DeLisa

Student Services Operations Director  
Ms. Carmen Poston-Farmer

Collegewide Dean for  
Student Access and  
GT Student Services  
Dr. Karen Roseberry

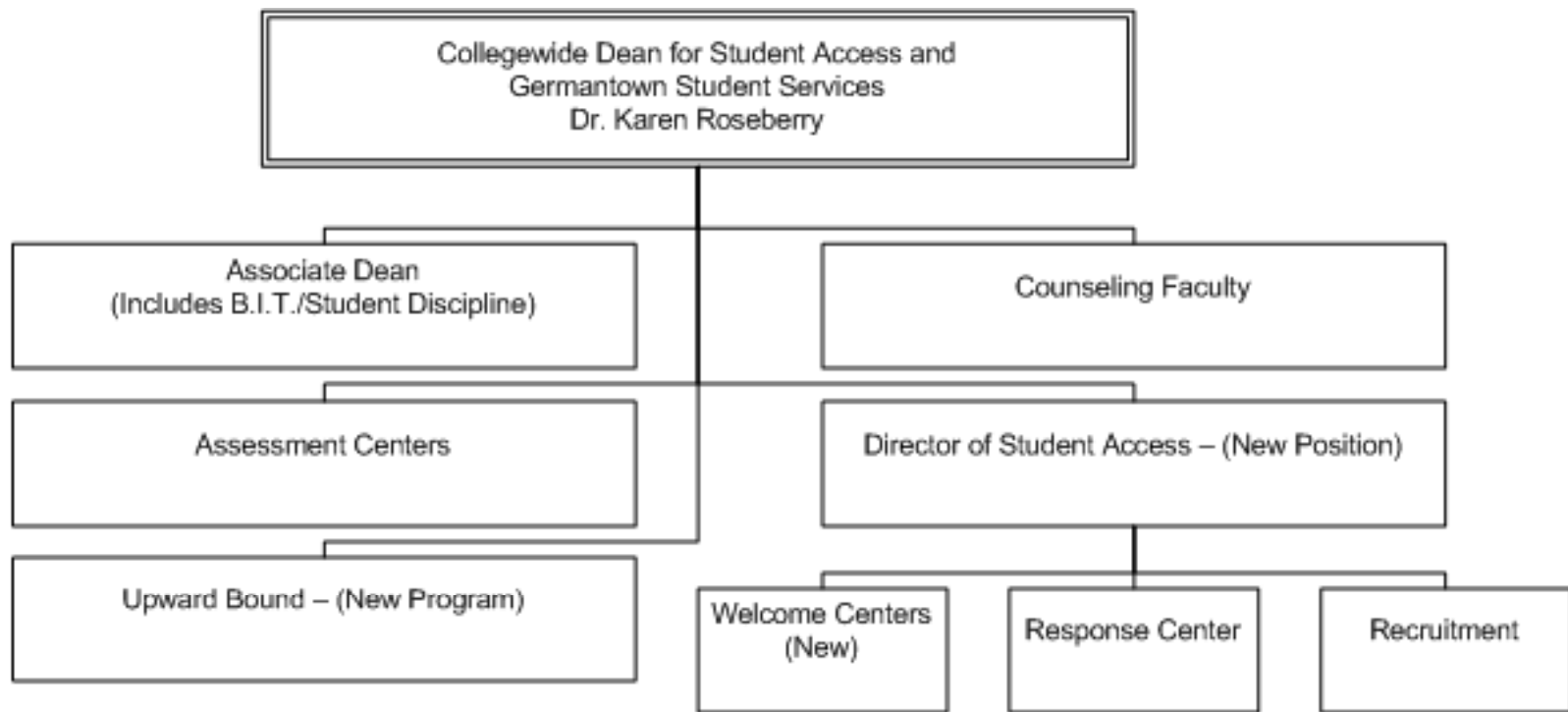
Collegewide Dean for  
Student Success and  
RV Student Services  
Dr. Monica Brown

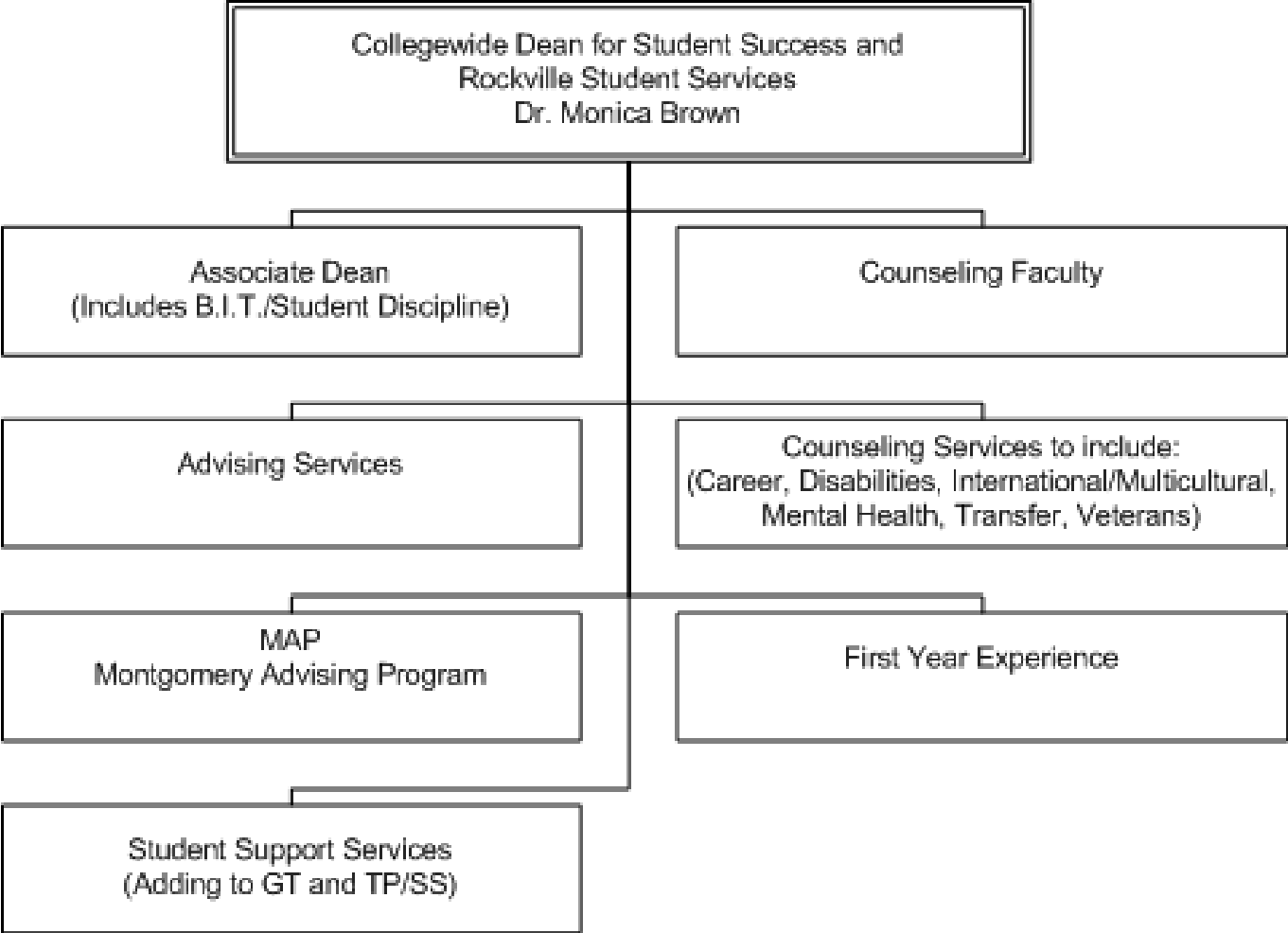
Collegewide Dean for  
Student Engagement and  
TP/SS Student Services  
Dr. Clemmie Solomon

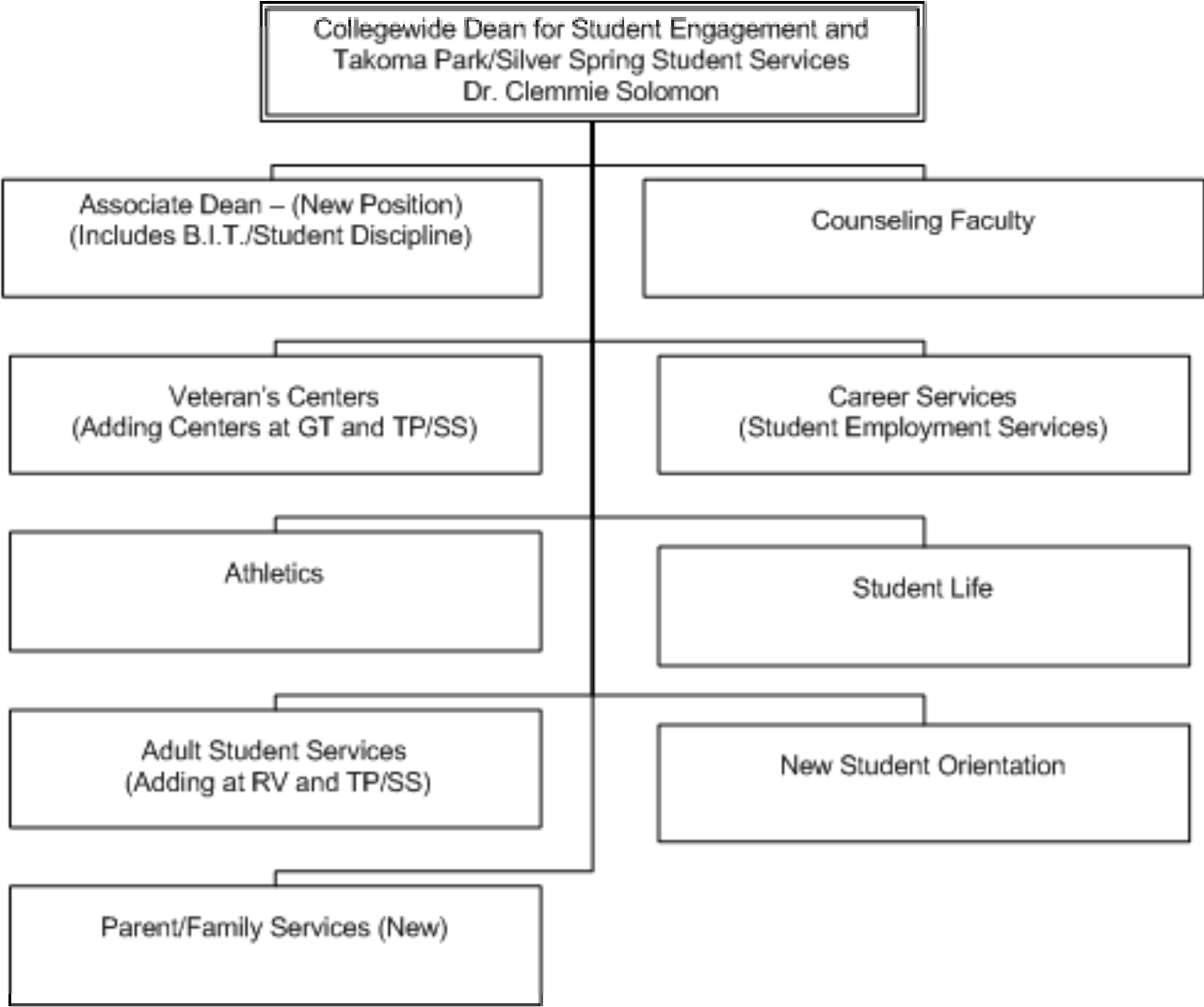
College Director of Student  
Financial Aid  
Ms. Melissa Gregory

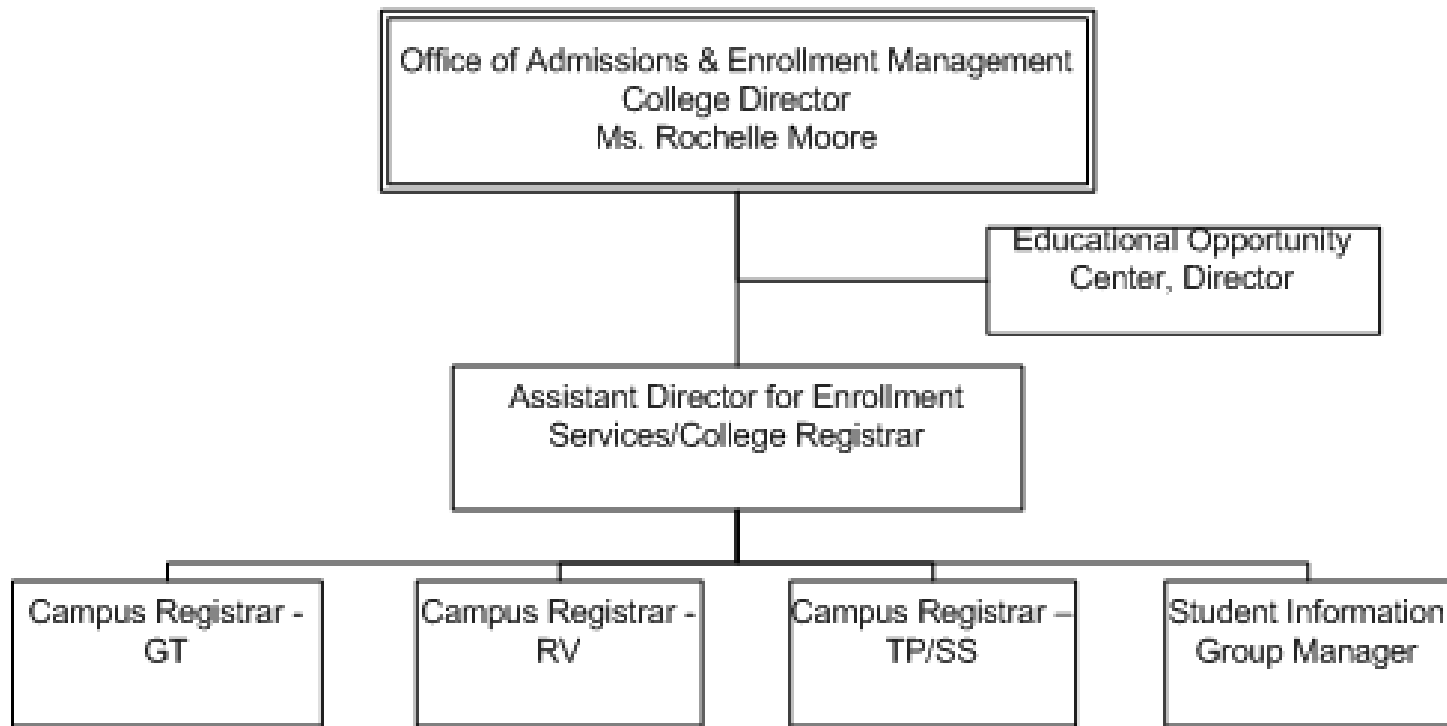
College Director of  
Admissions & Enrollment  
Management  
Ms. Rochelle Moore

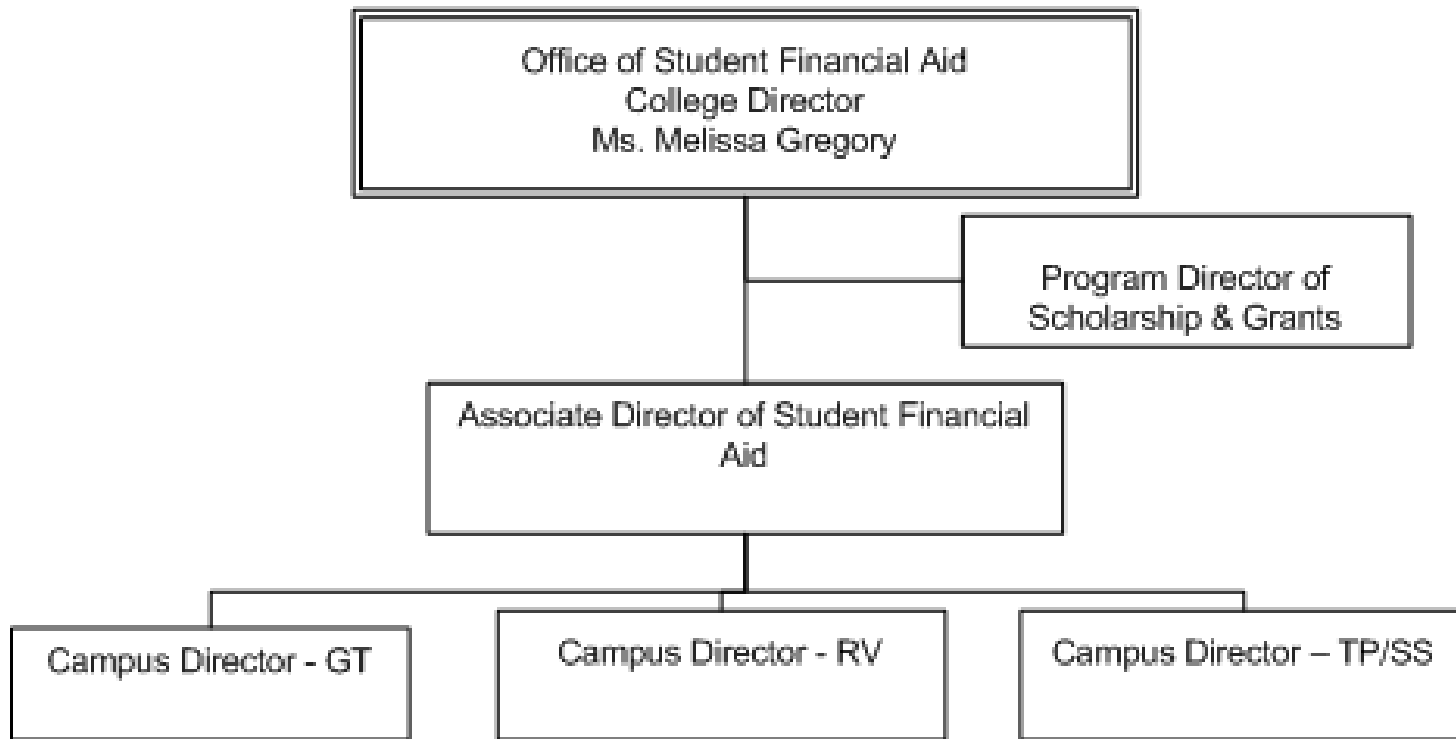












# Reallocation for New Positions

- Director of Student Access
- Associate Dean
- Welcome Center Personnel
- Upward Bound Personnel (Grant Funded)
- International/Multi-Cultural Personnel
- Mental Health Personnel
- Student Support Services Personnel (Grant Funded)
- Veteran's Personnel

# Reallocation for New Positions

- Athletics Personnel
- Adult Student Services Personnel
- Parent/Family Services Personnel
- Financial Aid Personnel
- Admissions and Enrollment Personnel

# Transition Period

- Four Month Transition Period
- Transition Meetings in various Collegewide configurations
- Communication, Preparation and Planning